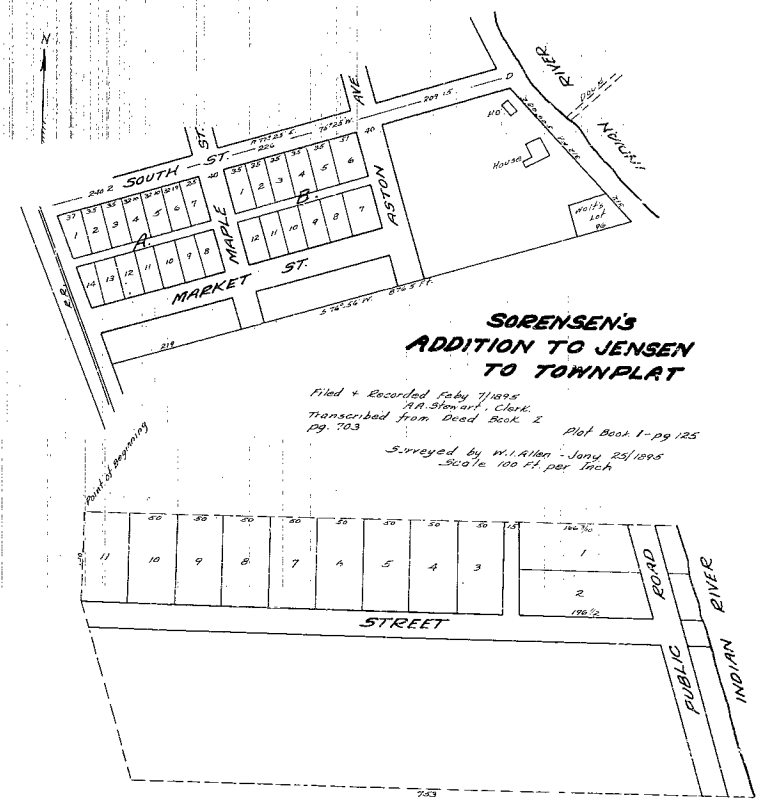
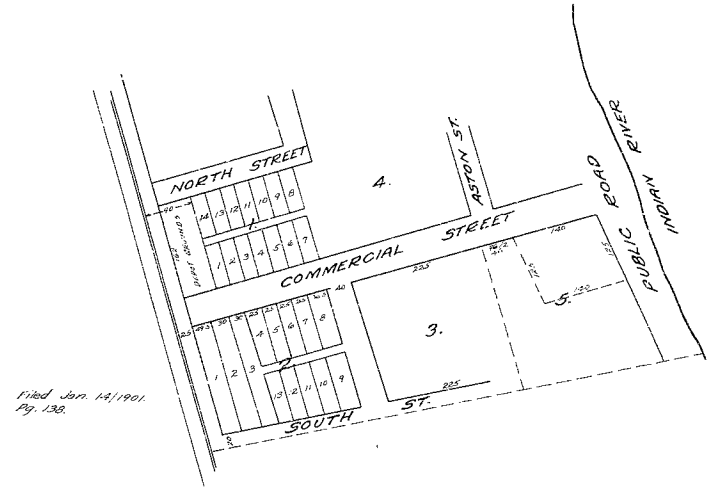


This is a true and correct copy of
 Plat Book 1 - pg. 125
 Page 125 of 125
 Vol. 125 of 125
 Registered Land Surveyor
 Florida Certificate No. 443

210



I do hereby certify that this
 Resubdivision was made by my
 request and is in conformity
 with the laws of the State of
 Florida and that the same has
 been duly recorded in the
 public records of the State of
 Florida and that no objection
 has been made in any way
 to the same.
 Witness my hand and seal
 this 14th day of January
 1901.
 John L. Jensen.



**PLAT OF
 B.F. HULLS ADDITION TO
 JENSEN**
 Filed Oct. 8/1901
 Plat Book 1 - pg. 125

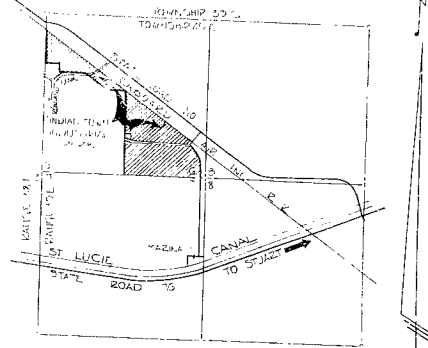
COURTESY OF DOCUMENT
 DEPARTMENT FOR MICROFILMING

22:1

Indiantown Industrial Park

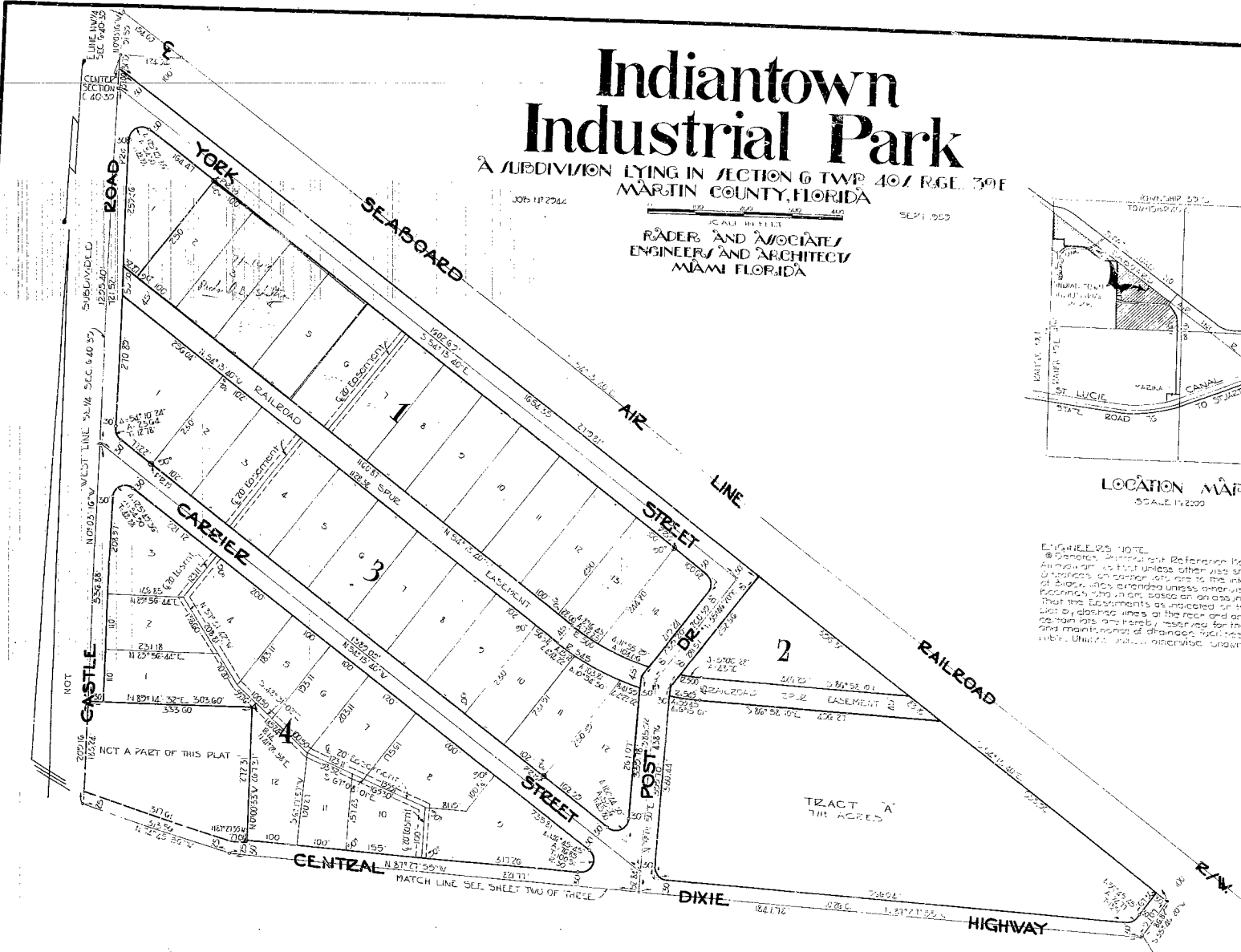
A SUBDIVISION LYING IN SECTION 6 TWP. 40 N. RGE. 30 E.
MARTIN COUNTY, FLORIDA

SCALE: HETTER
 RADER AND ASSOCIATES
 ENGINEERS AND ARCHITECTS
 MIAMI, FLORIDA



LOCATION MAP
SCALE: 1:1200

EXHIBIT 25 107L
 @ District, Government Reference Documents
 Any person is free to use these documents
 in any way, provided that the intersection
 of the lines is clearly indicated and that
 the documents are clearly identified.
 That the documents as indicated on the attached
 list are hereby transferred for the information
 and use of the interested parties and/or
 their authorized representatives.



TRACT 'A'
7.18 ACRES

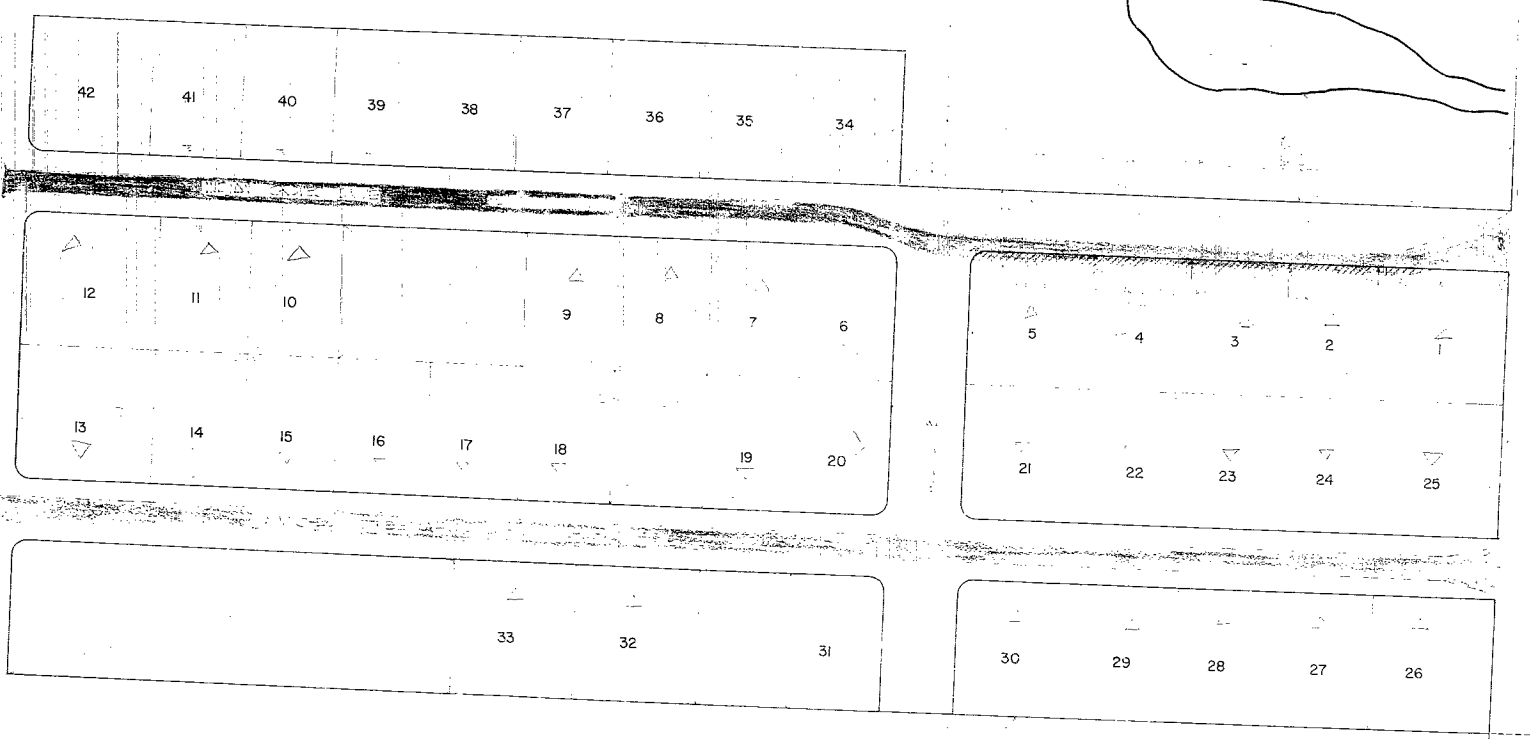
22:1

CONDITION OF DOCUMENT
UNRELIABLE FOR MICROFILMING

SHEET ONE OF THREE

SCALE: 1/2" = 100'
 DRAWN: J.H.C.
 100' L.S.C.

54
55



22:1

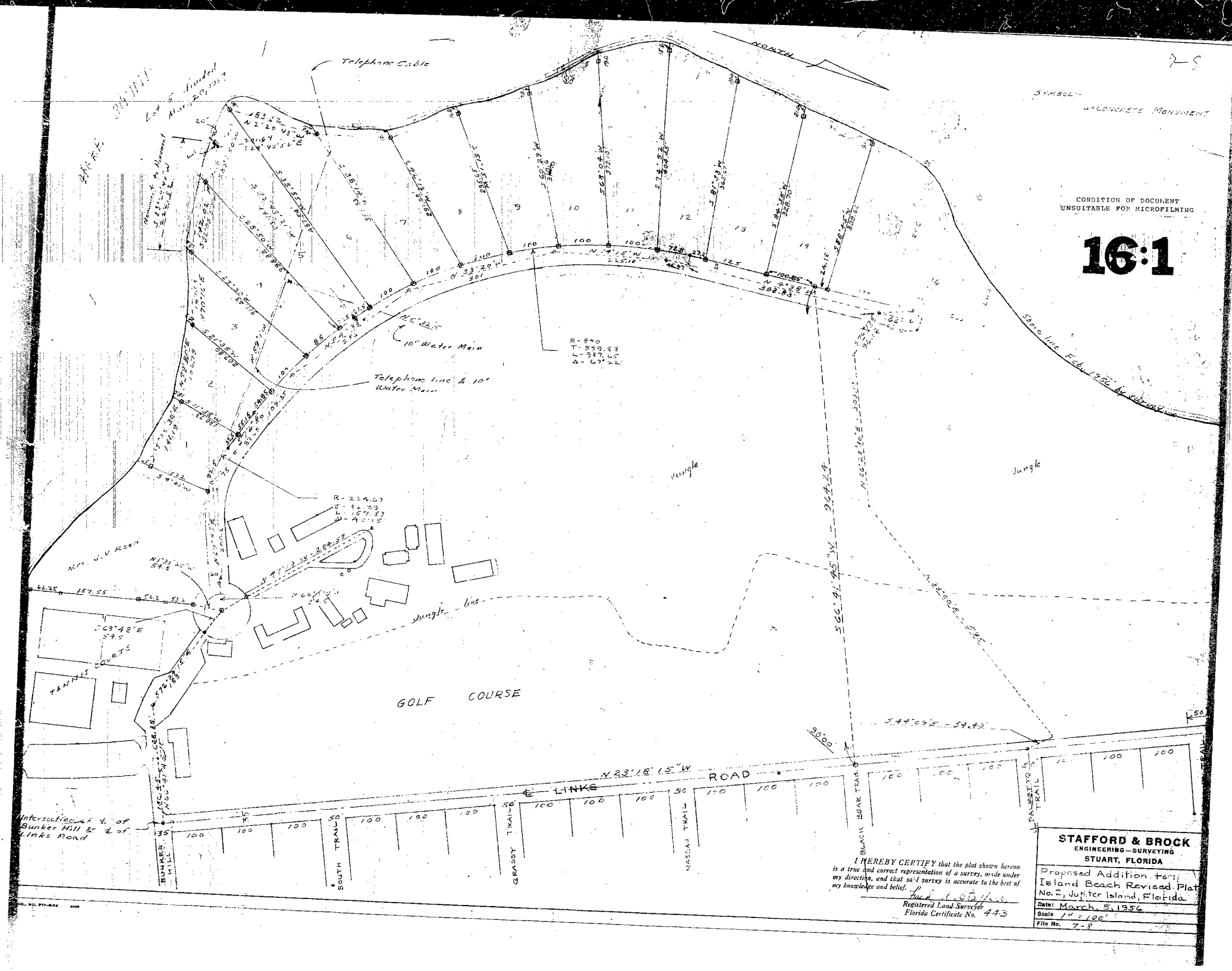
CONDITION OF DOCUMENT
UNSATISFACTORY FOR MICROFILMING

INDIAN GROVES SUBDIVISION
DEAN DEVELOPMENT CORPORATION
STUART, FLORIDA

GREENLEES, ARBE, EAST & MONTGOMERY, INC.
Engineers

PROFESSIONAL ENGINEER LICENSE NO. 11,117, FLORIDA

DRAWN BY: [blank] DATE: [blank] PROJECT NO. [blank]
CHECKED: [blank] SCALE: [blank] SHEET NO. 2



16:1

SYMBOL - CONCRETE MONUMENT

CONDITION OF DOCUMENT
UNSUITSABLE FOR MICROFILMING